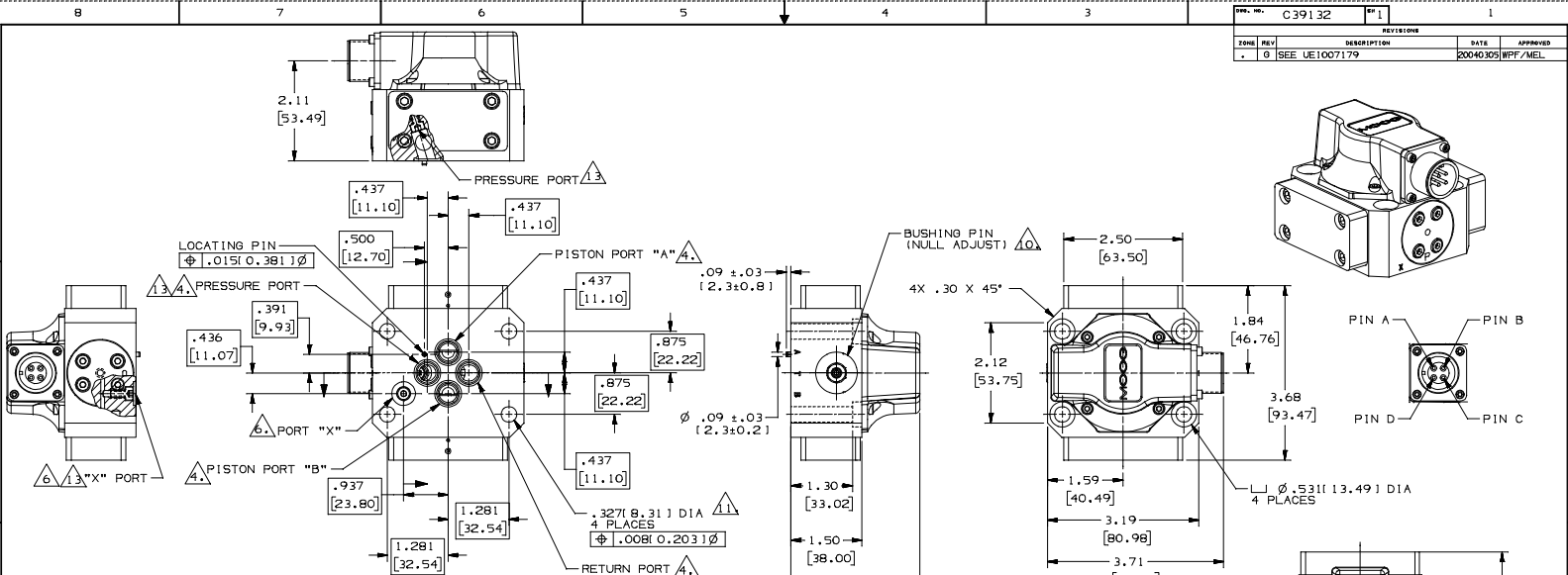
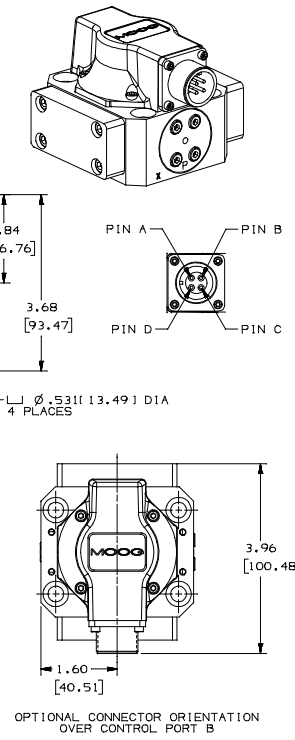
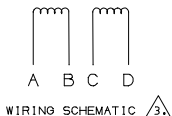


REV	DESCRIPTION	DATE	APPROVED
0	SEE UE1007179	20040305	WPF/MEL



- NOTES:
- FLUID: INDUSTRIAL TYPE PETROLEUM BASE HYDRAULIC FLUID. 10 MICRON (25 ABSOLUTE) FILTRATION REQUIRED.
 - OPERATING TEMPERATURE RANGE: -20°F TO +275°F (-29°C TO +135°C).
 - VALVE PHASING: FLOW OUT OF PORT NO. "B" WILL RESULT WHEN: SERIES OPERATION: B & C TIED, A PLUS, D MINUS. PARALLEL OPERATION: A & C PLUS, B & D MINUS. SINGLE OPERATION: A PLUS, B MINUS OR C PLUS, D MINUS
 - PORTS: C'BORED NOMINAL .563 [14.30] O.D. X .055 [1.40] DEEP $\phi .008 [0.203]$.
 - 4 PORT O-RINGS ARE .070 [1.78] SECTION X .426 [10.82] I.D. HAVING COMPATIBLE O-RING COMPOUND (REF. UNIVERSAL SIZE -013); X-PORT ORING IS .070 X .364 I.D. HAVING COMPATIBLE ORING COMPOUND (REF. UNIVERSAL SIZE -012).
 - "X" PORT .295 [7.49] DIA, C'BORE NOMINAL .500 [12.70] O.D. X .052 [1.32] DEEP $\phi .008 [0.203]$.
 - SURFACE TO WHICH VALVE IS MOUNTED REQUIRES $\sqrt{32}$ [1.6], FLAT WITHIN .001 [0.025] TIR.
 - DIMENSIONS WITHOUT TOLERANCE ARE FOR REFERENCE ONLY.
 - ELECTRICAL CONNECTOR MATES WITH MS3106-14S-2S OR EQUIVALENT.
 - NULL ADJUST: FLOW OUT OF PORT "B" IS OBTAINED WITH CLOCKWISE ROTATION OF NULL ADJUST PIN.
 - SUGGESTED MOUNTING SCREWS: .312-18 X 1.750 LONG (M8 X 45) SOCKET HEAD SCREWS (4 REQUIRED).
 - DIMENSIONS IN BRACKETS [] ARE IN MILLIMETERS.
 - ACTIVATE "X" PORT: REMOVE PLUG (M4 SOCKET HEAD SCREW) AND SEAL WASHER IN "X" PORT AND MOVE TO "PRESSURE PORT". DEACTIVATE "X" PORT: REVERSE ABOVE OPERATION.



G761 SERIES		INSTALLATION	
REV	PART NO IDENTIFYING NO.	NONNOMENATURE OR DESCRIPTION	CAGE CODE FIND NO.
PARTS LIST			
CONTRACT NO.	PREPARED BY: FLYNN	DATE: 6/12/76	TITLE
CHECKED BY: X.F.	DATE: 6/18/76	MOOG INC., EAST AURORA, NY 14052	
INSTALLATION G761 SERIES VALVE (GLOBAL BODY)			
SIZE	DRAWING NO.	REV NO.	SCALE
D194697	C39132	1	1/1
UNIVERSAL SIZE BASE			