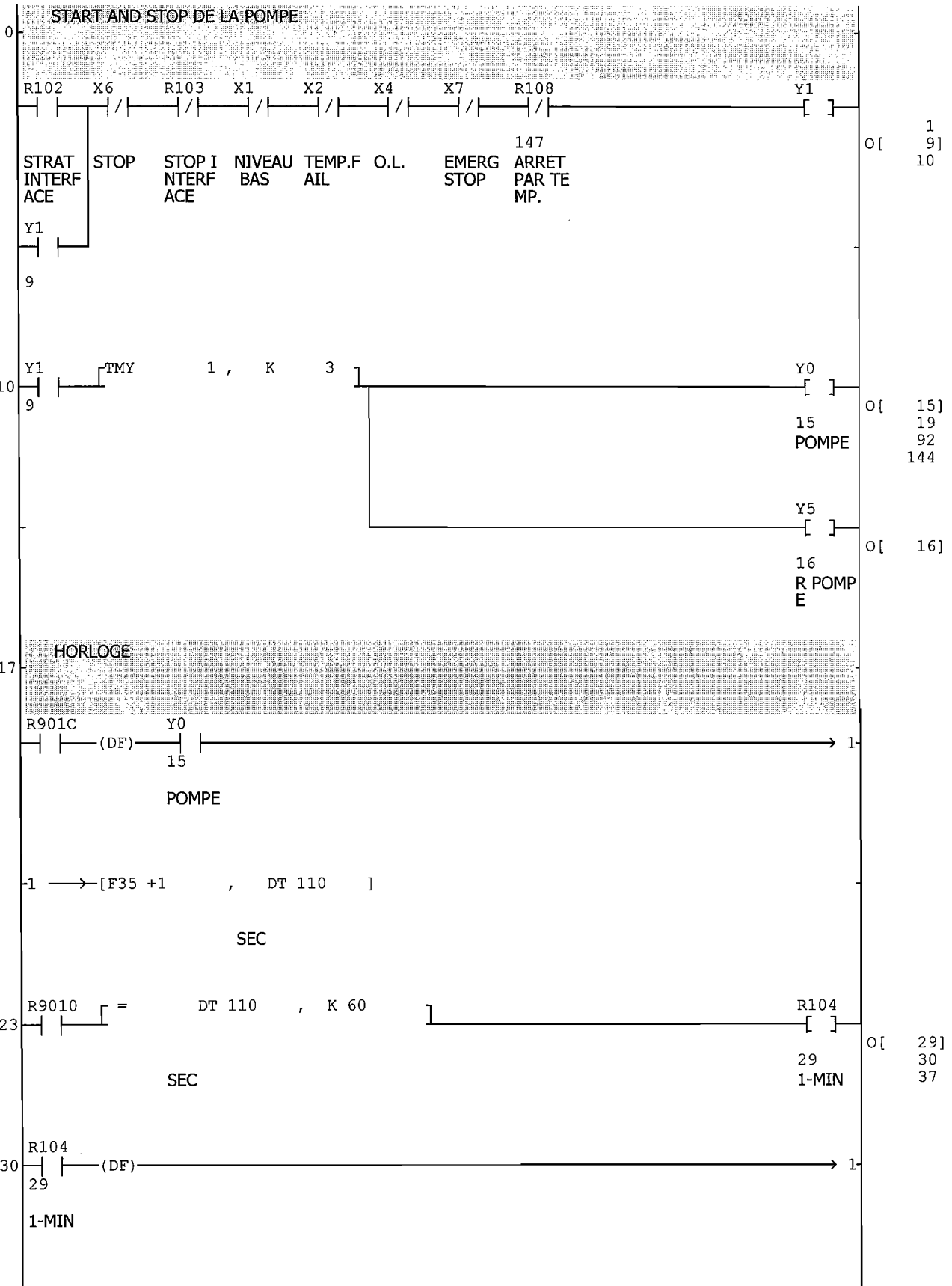


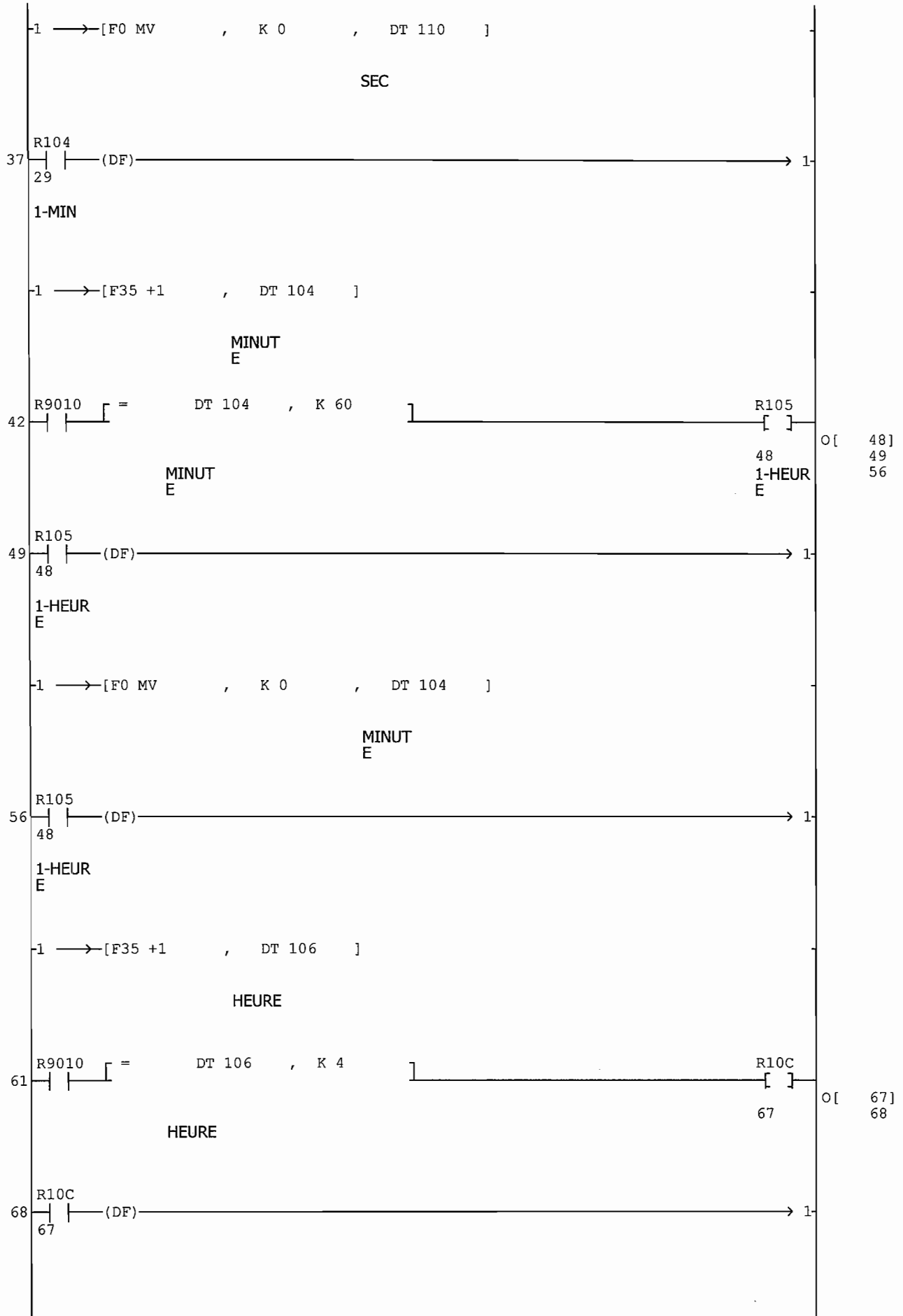
Program Name	Pompe2
PLC Type	FP0 2.7K
Title	
Date	2001-10-09
Author	
Number of Steps	218

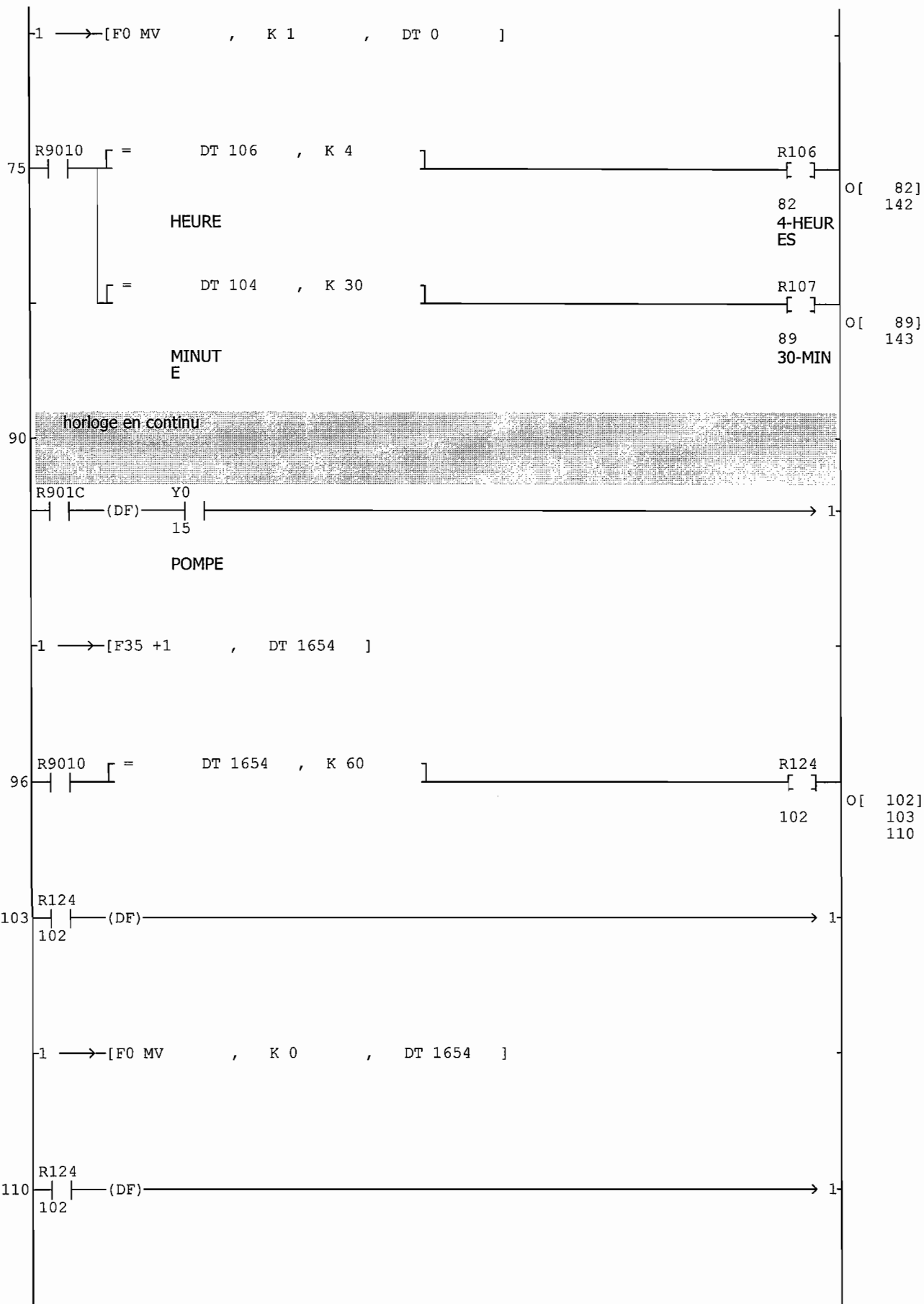
[Comment]

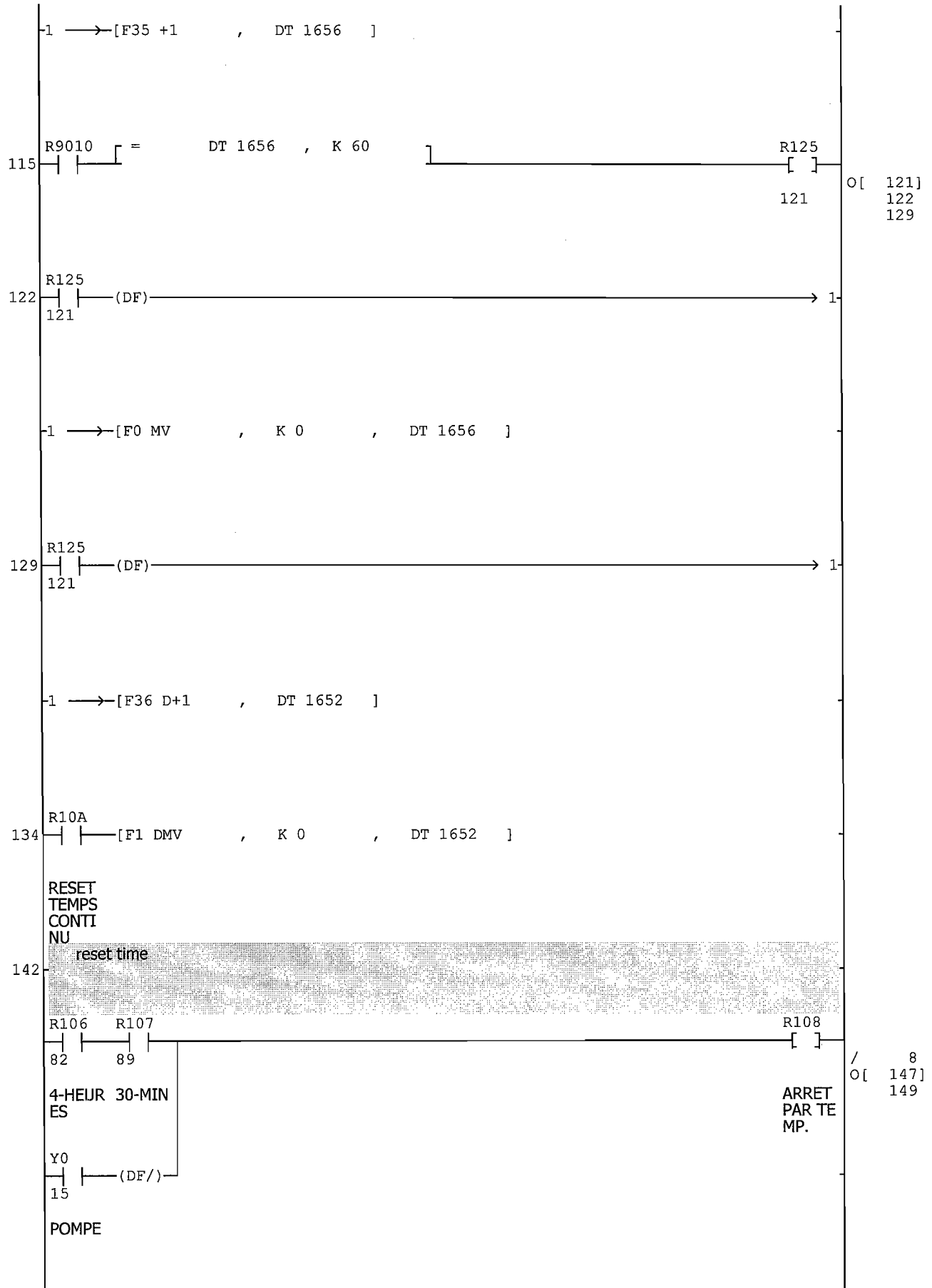
REKLAB HYDRAULIC PUMP CONTROL

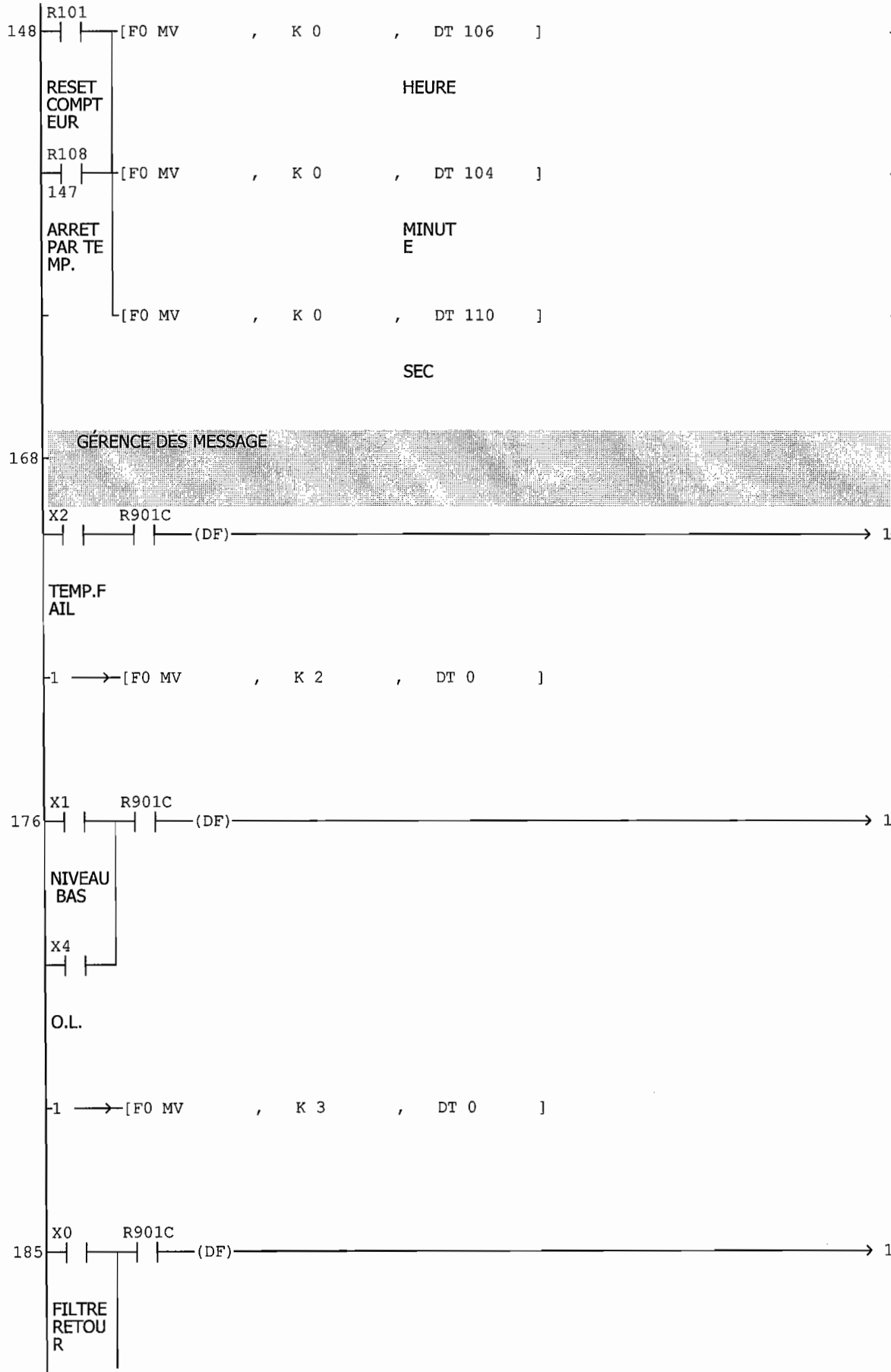
Check	Author

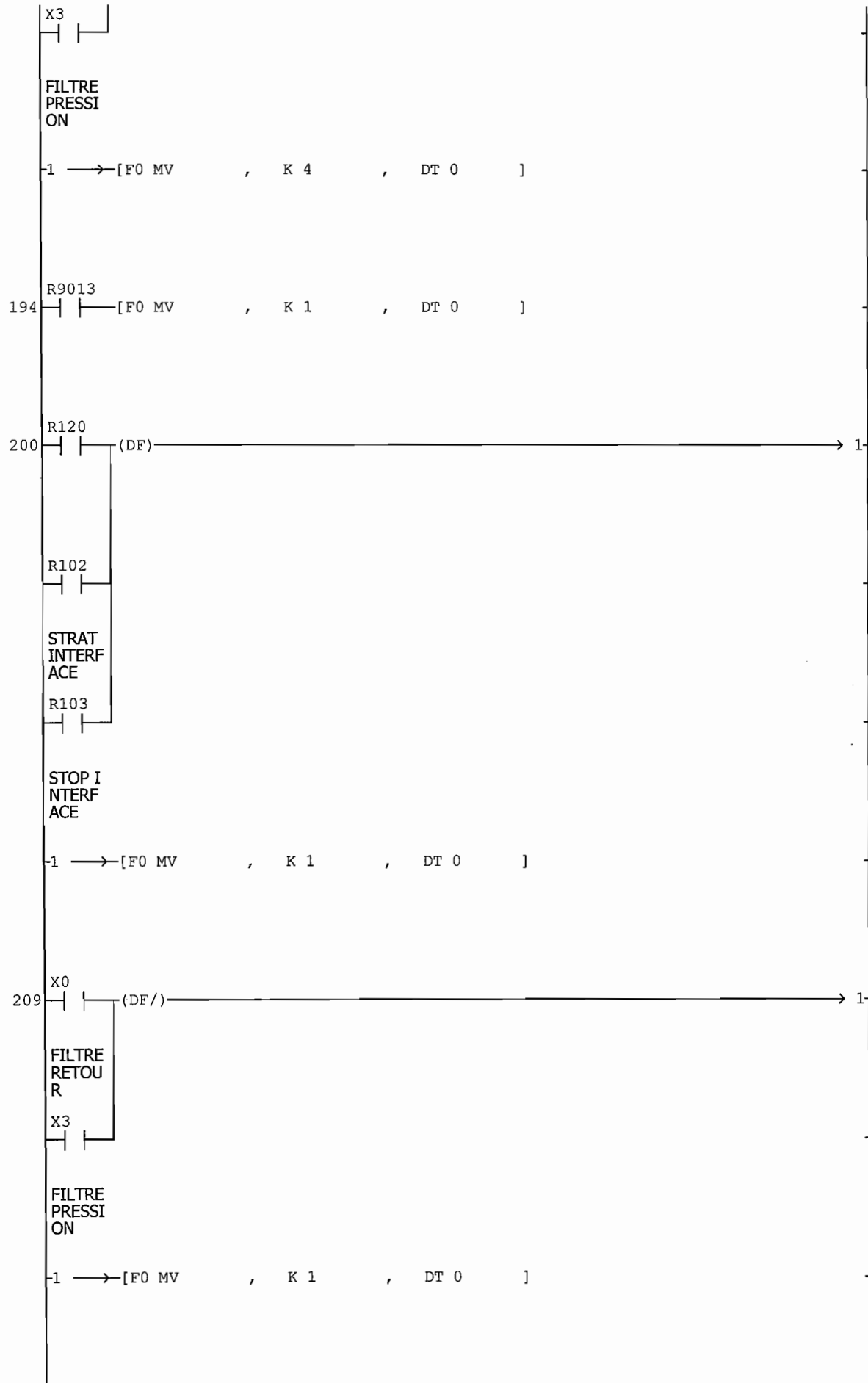












X	0	* FILTRE RETOUR 185 , 209
X	1	* NIVEAU BAS / 4 , 176
X	2	* TEMP.FAIL / 5 , 168
X	3	* FILTRE PRESSION 186 , 210
X	4	* O.L. / 6 , 177
X	6	* STOP / 2
X	7	* EMERG STOP / 7
Y	0	* POMPE O[15] , 19 , 92 , 144
Y	1	* 1 , O[9] , 10
Y	5	* R POMPE O[16]
R	101	* RESET COMPTEUR 148
R	102	* STRAT INTERFACE 0 , 201
R	103	* STOP INTERFACE / 3 , 202
R	104	* 1-MIN O[29] , 30 , 37
R	105	* 1-HEURE O[48] , 49 , 56
R	106	* 4-HEURES O[82] , 142
R	107	* 30-MIN O[89] , 143
R	108	* ARRET PAR TEMP. / 8 , O[147] , 149
R	10A	* RESET TEMPS CONTINU 134
R	10C	* O[67] , 68
R	120	* 200
R	124	* O[102] , 103 , 110
R	125	* O[121] , 122 , 129
R	9010	* 23 , 42 , 61 , 75 , 96 , 115
R	9013	* 194
R	901C	* 17 , 90 , 169 , 178 , 187
T	1	* 11
DT	0	* 73 , 174 , 183 , 192 , 198 , 207 , 215
DT	104	* MINUTE 40 , 44 , 54 , 85 , 160
DT	106	* HEURE 59 , 63 , 78 , 154
DT	110	* SEC

DT 110		21	,	25	,	35	,	166
DT 1652	*	132	,	140				
DT 1654	*	94	,	98	,	108		
DT 1656	*	113	,	117	,	127		

[User Memory Allocation]

No.0 Sequence program area capacity [3 K Word]

[Hold/Non-hold]

No.5 Counter starting address [100]

[Action on Error]

No.20 Duplicate Out by OUT, KP instructions [Disable]

No.23 When an I/O verification error occurs [Stop]

No.26 When an operation error occurs [Stop]

No.27 When a communication error occurs in the S-LINK system [Operate]

[Time Settings]

No.31 Waiting time for managing multiple frame [6500.0 msec]

No.34 Constant scan time [0.0 msec]

[High Speed Counter]

No.400 HSC operation mode settings (X0-X2) [Not Set X0 as High Speed Counter]

No.400 HSC operation mode settings (X0-X2) [Not Set X1 as High Speed Counter]

No.401 HSC operation mode settings (X3-X5) [Not Set X3 as High Speed Counter]

No.401 HSC operation mode settings (X3-X5) [Not Set X4 as High Speed Counter]

[Interrupt Input]

No.402 Pulse-catch input settings

<0: Normal>

<1: Pulse-Catch>

X7 X6 X5 X4 X3 X2 X1 X0

0	0	0	0	0	0	0	0
---	---	---	---	---	---	---	---

No.403 Interrupt trigger settings

<0: Normal>

<1: Interrupt Input>

X5 X4 X3 X2 X1 X0

0	0	0	0	0	0
0	0	0	0	0	0

[COM Port Settings]

No.412 Operation selection of RS232C port [Computer Link]

No.413 Transmission format of RS232C Data length [8 Bits]

No.413 Parity check [Odd]

No.413 Stop bit [1 Bit]

No.413 Terminator [CR]

No.413 Header [STX Not Exist.]

No.414 Baud rate Settings for RS232C [9600]

No.416 RS232C Modem Connection [No]

[Tool Port Settings]

No.410 Unit No. [1]

No.411 Communication format Data length [8 Bits]

No.411 RS232C Modem Connection [No]

No.414 Baud rate Settings for RS232C [9600]

[Computer Link]

No.415 Unit No. [1]

[General Link]

No.417 Specify starting address for data received [0]

No.418 Specify buffer capacity setting for data received [1660]